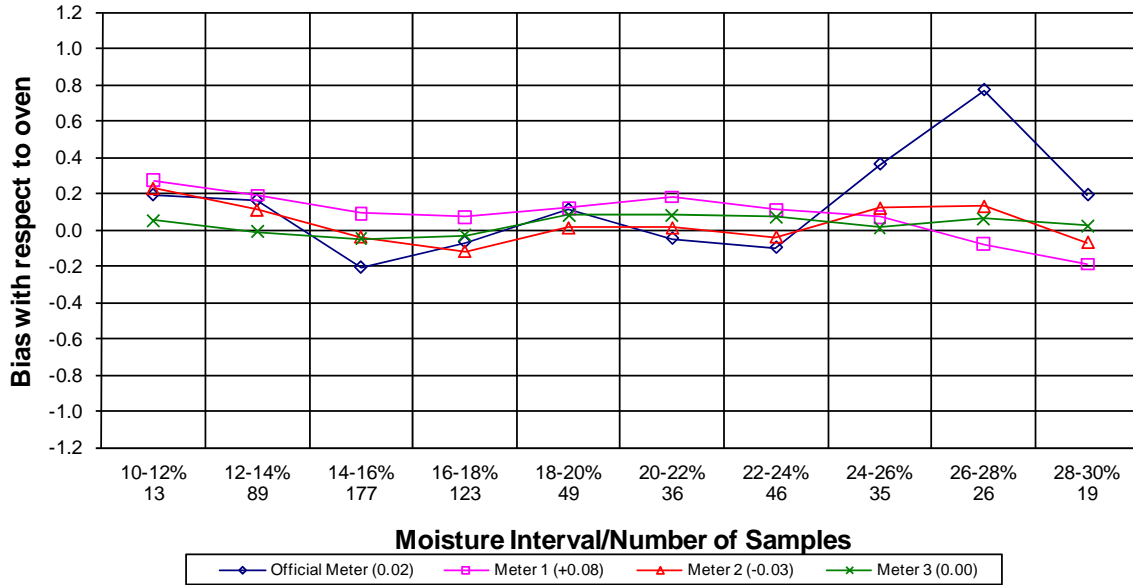
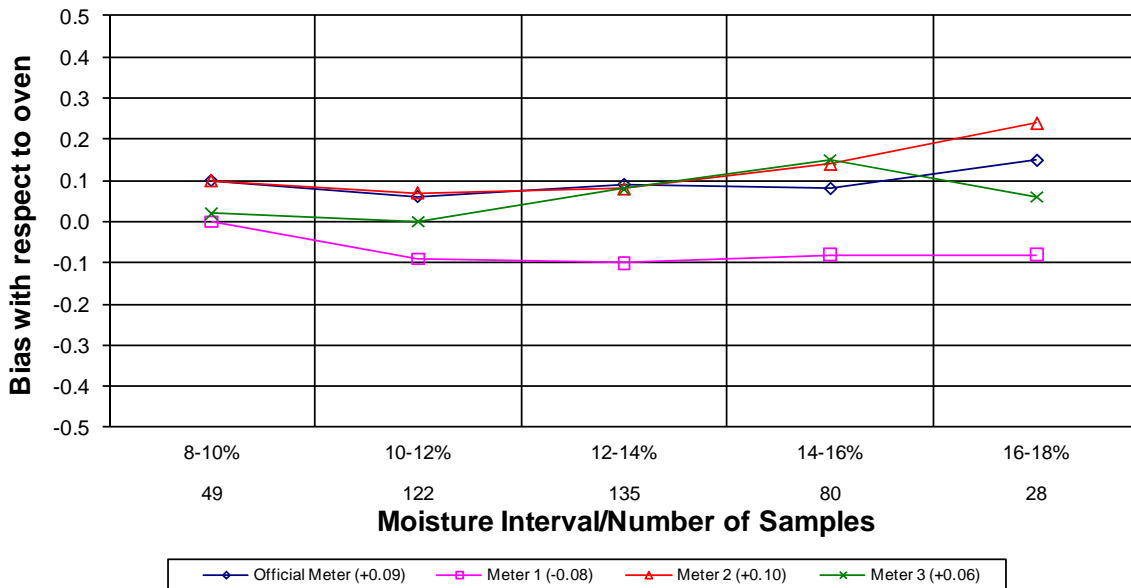


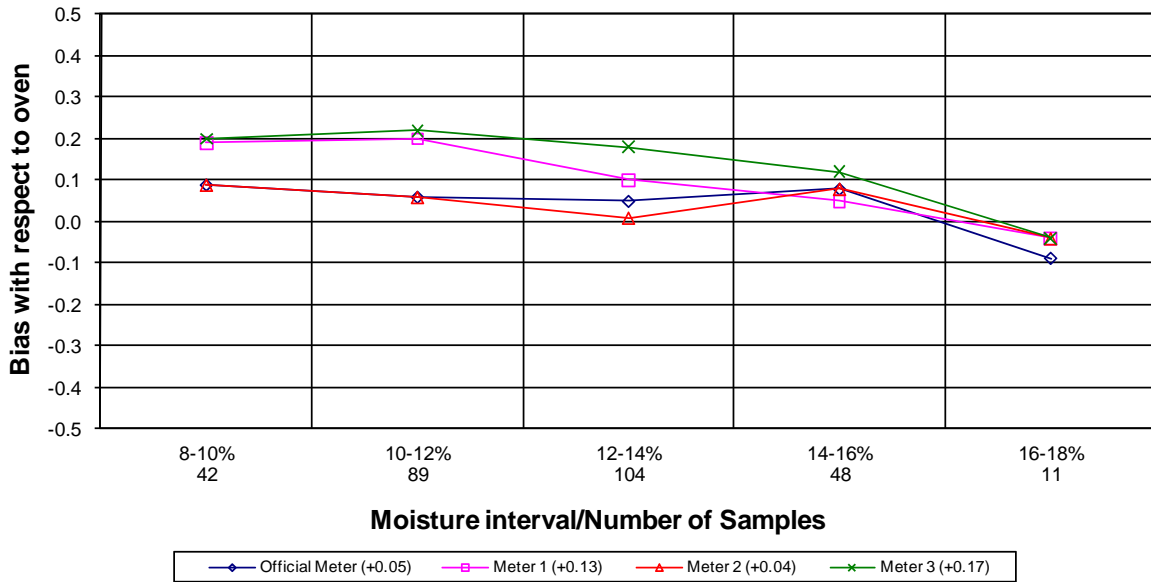
Moisture Meter Comparison - Corn 2008 - 2010 Crop Years



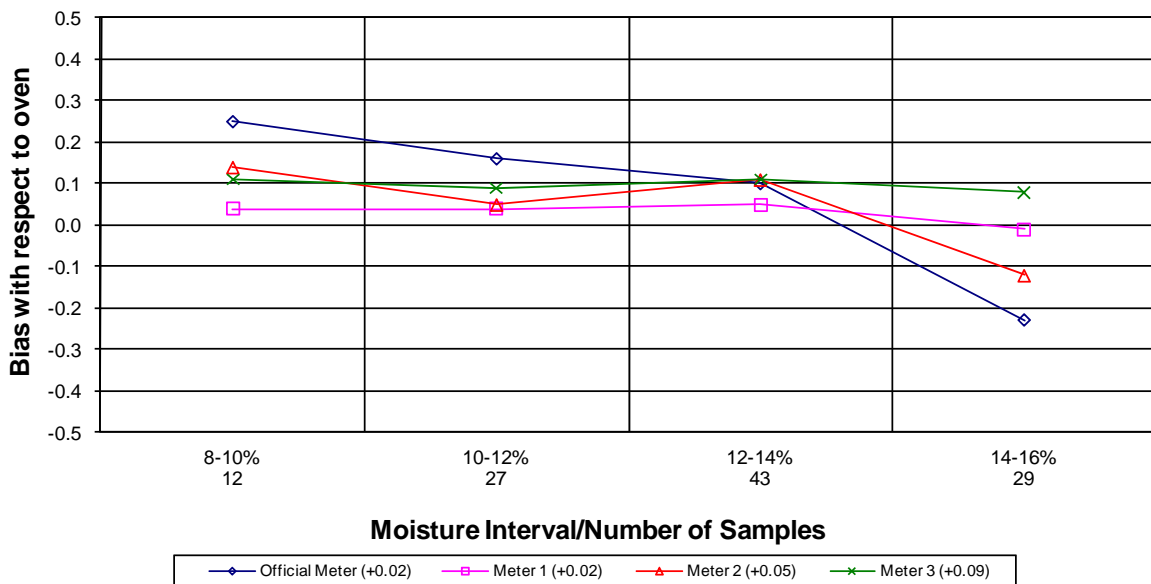
Moisture Meter Comparison - Soybeans 2008 - 2010 Crop Years



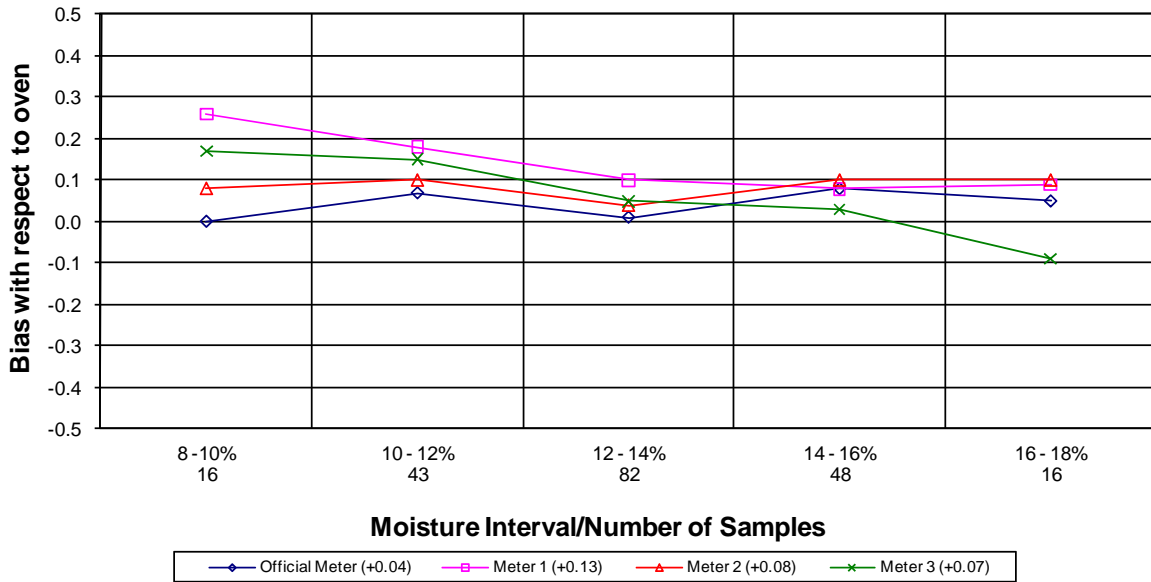
Moisture Meter Comparison - Hard Red Winter Wheat 2008 - 2010 Crop Years



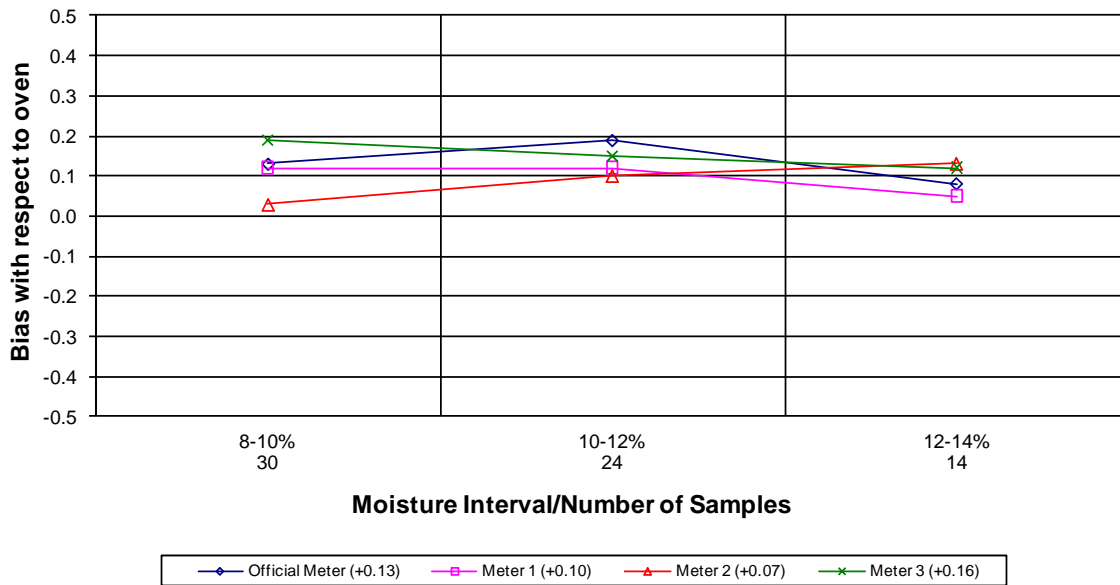
Moisture Meter Comparison - Durum 2008 - 2010 Crop Years



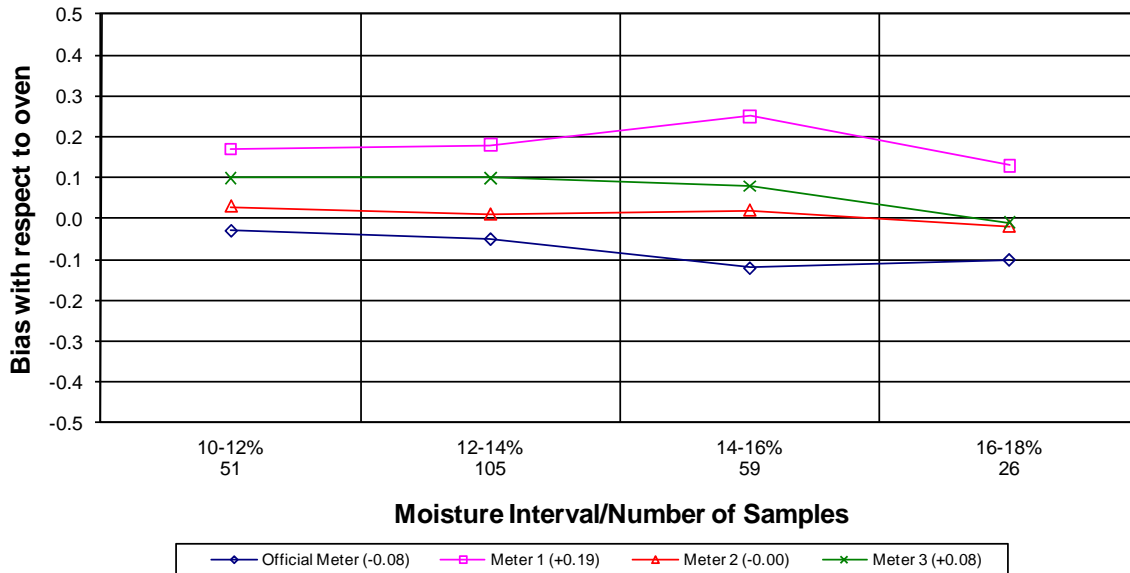
Moisture Meter Comparison - Hard Red Spring Wheat 2008 - 2010 Crop Years



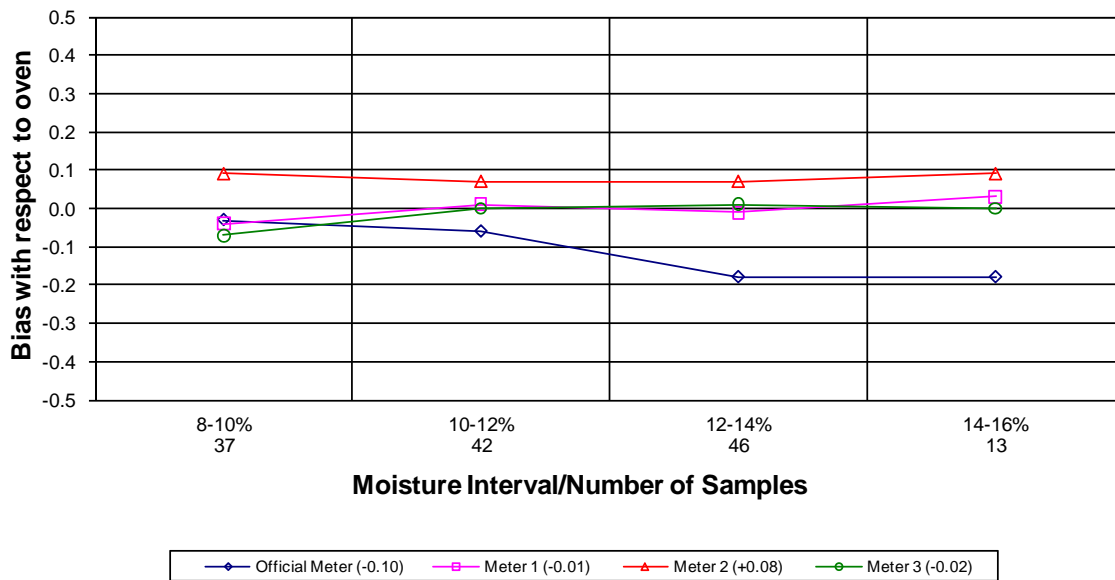
Moisture Meter Comparison - Hard White Wheat 2008 - 2010 Crop Years



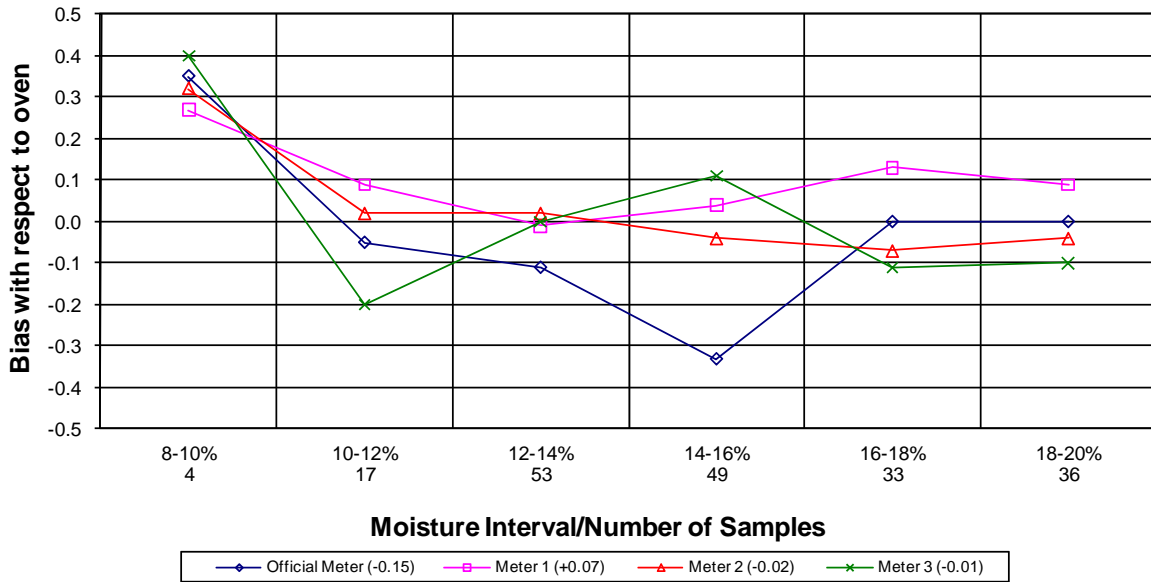
Moisture Meter Comparison - Soft Red Winter Wheat 2008 - 2010 Crop Years



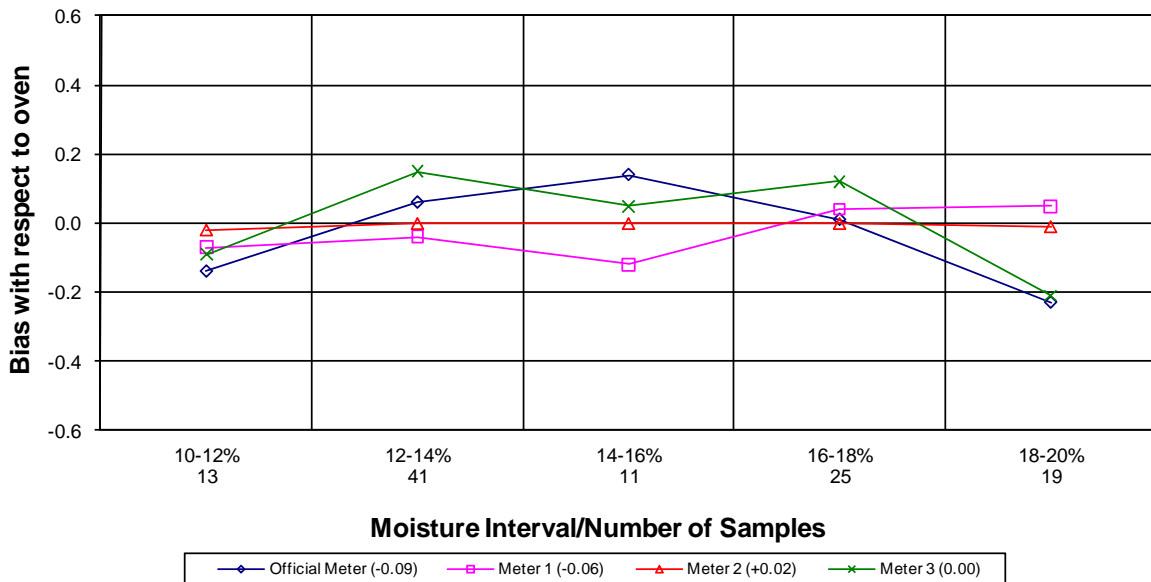
Moisture Meter Comparison - Soft White Wheat 2008 - 2010 Crop Years



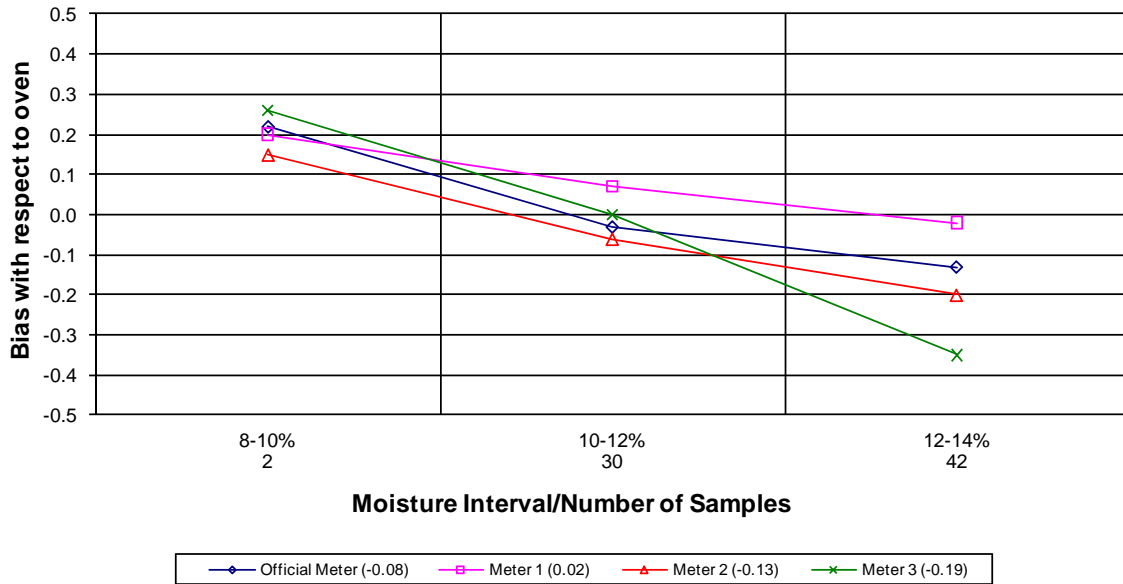
Moisture Meter Comparison - Long Grain Rough Rice 2008 - 2010 Crop Years



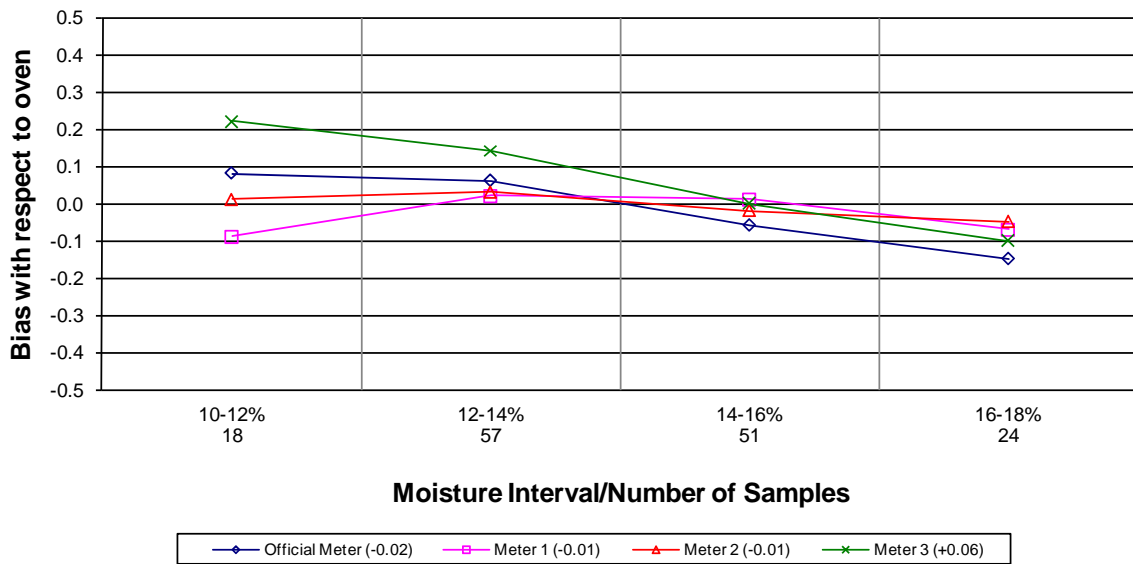
Moisture Meter Comparison - Medium Grain Rough Rice 2008 - 2010 Crop Years



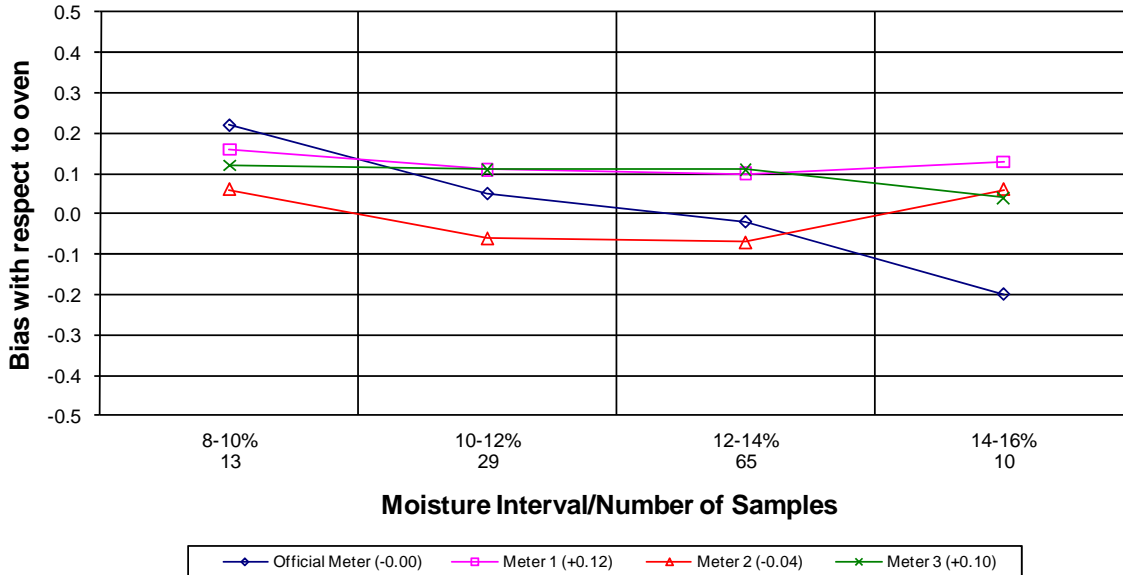
Moisture Meter Comparison - Oats 2008 - 2010 Crop Years



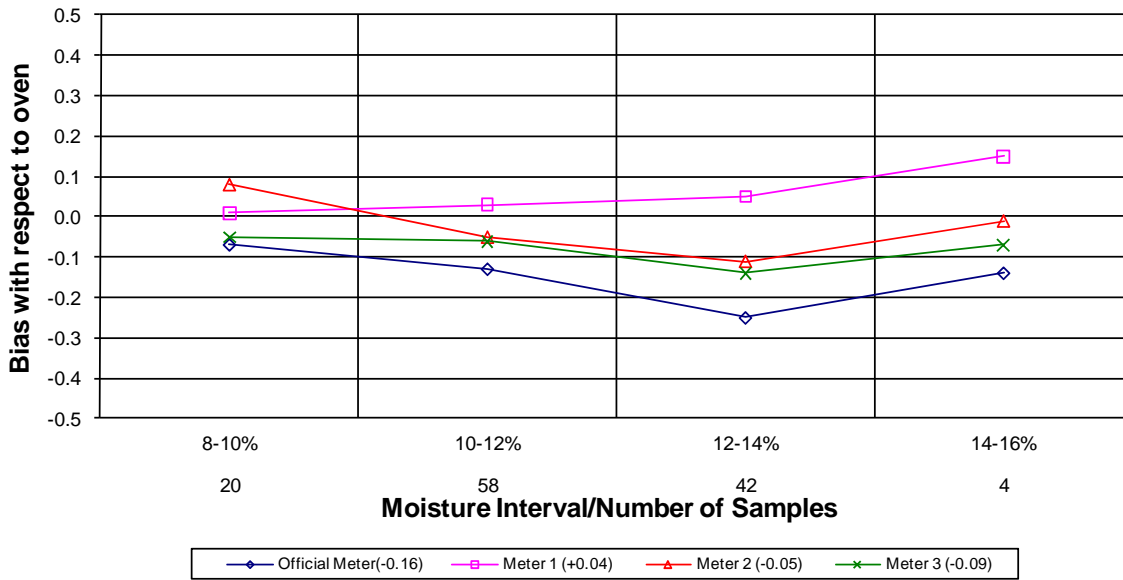
Moisture Meter Comparison - Grain Sorghum 2008 - 2010 Crop Years



Moisture Meter Comparison - Six Row Barley 2008 - 2010 Crop Years



Moisture Meter Comparison -Two Row Barley 2008 - 2010 Crop Years



Moisture Meter Comparison - Sunflower Seed

2008 - 2010 Crop Years

