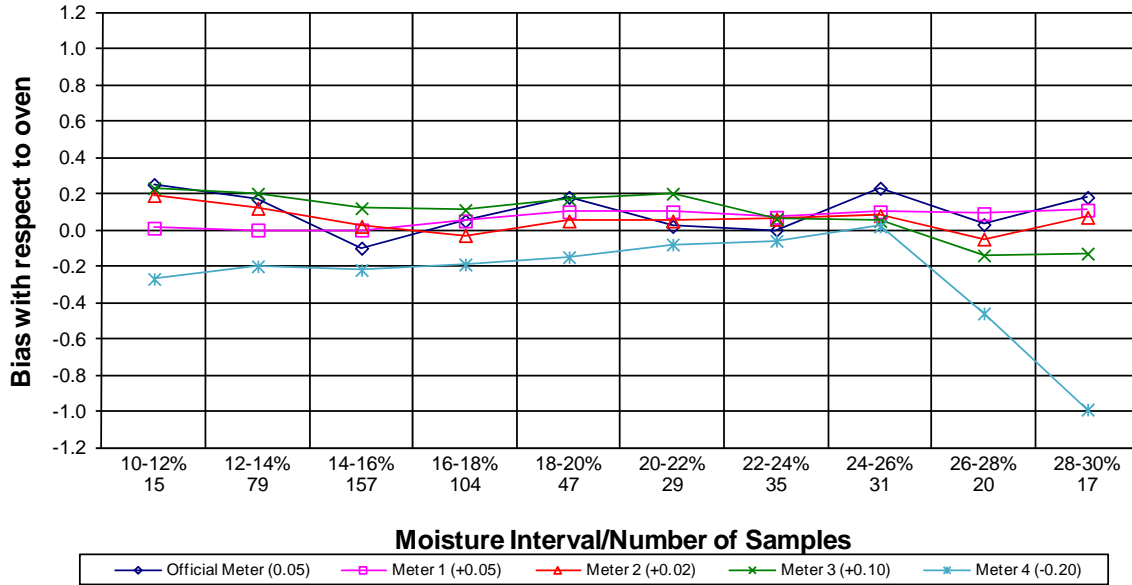
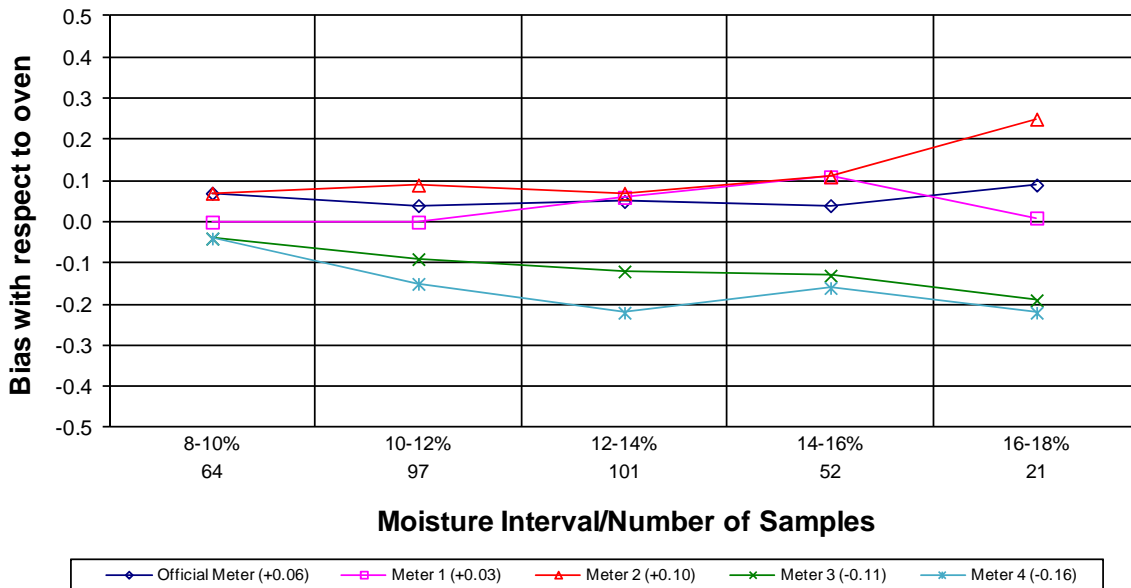


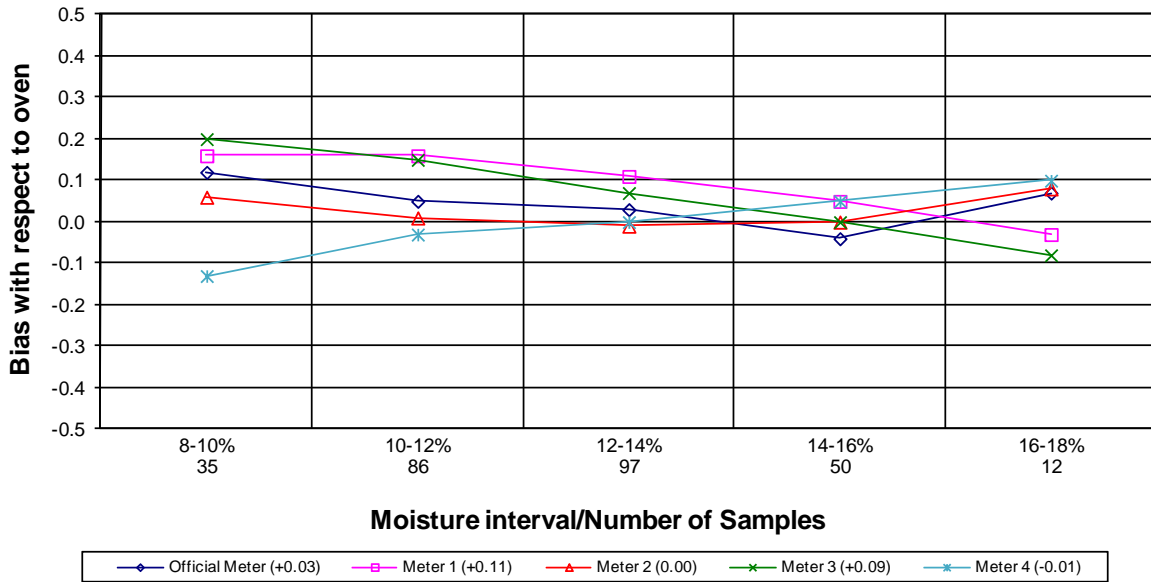
Moisture Meter Comparison - Corn 2009 - 2011 Crop Years



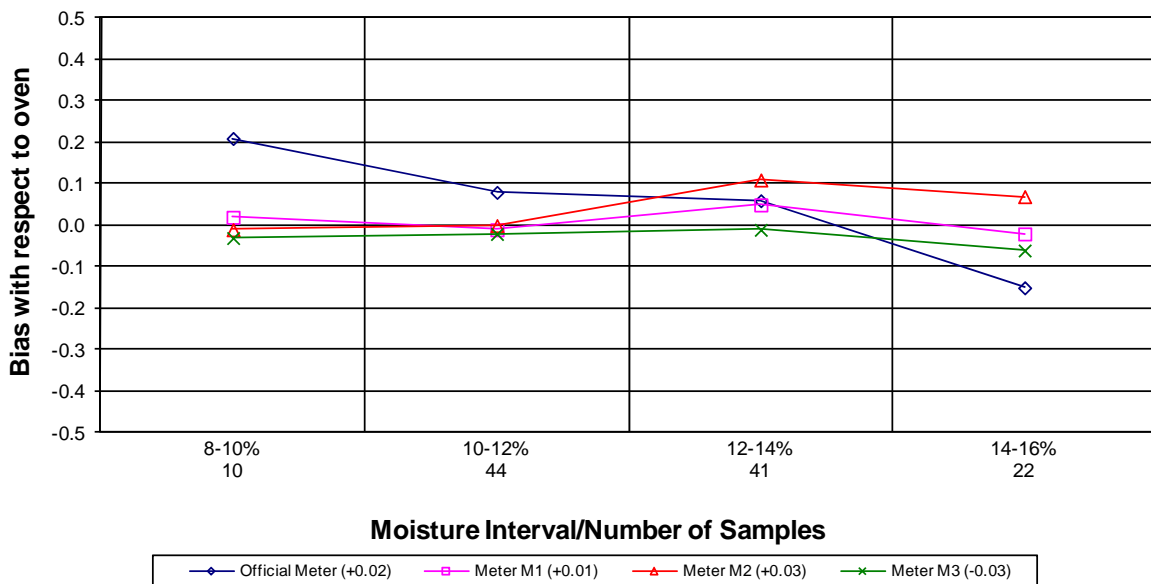
Moisture Meter Comparison - Soybeans 2009 - 2011 Crop Years



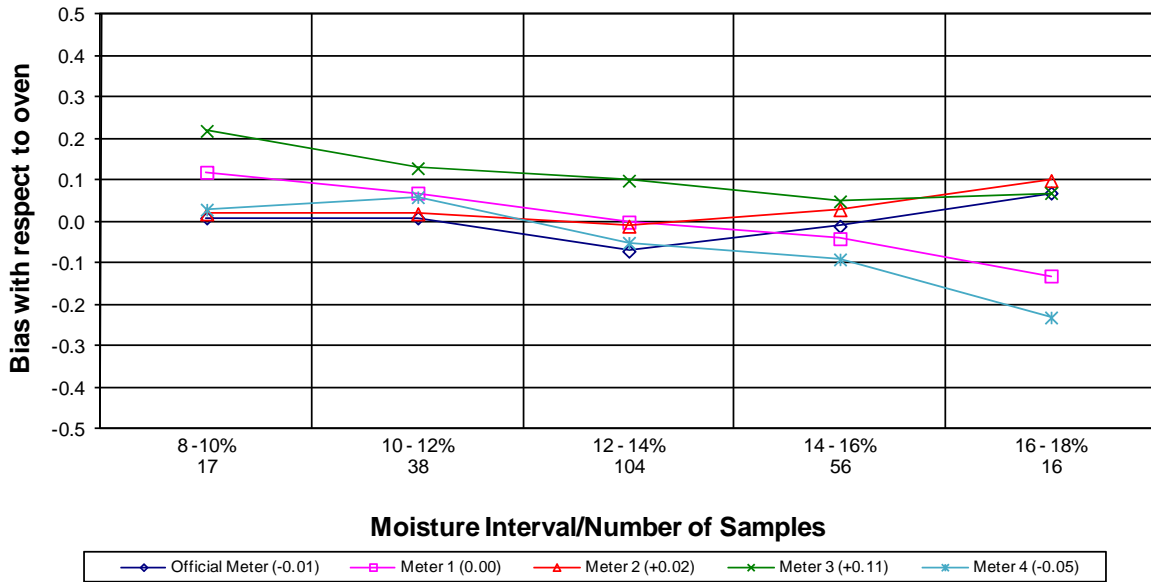
Moisture Meter Comparison - Hard Red Winter Wheat 2009 - 2011 Crop Years



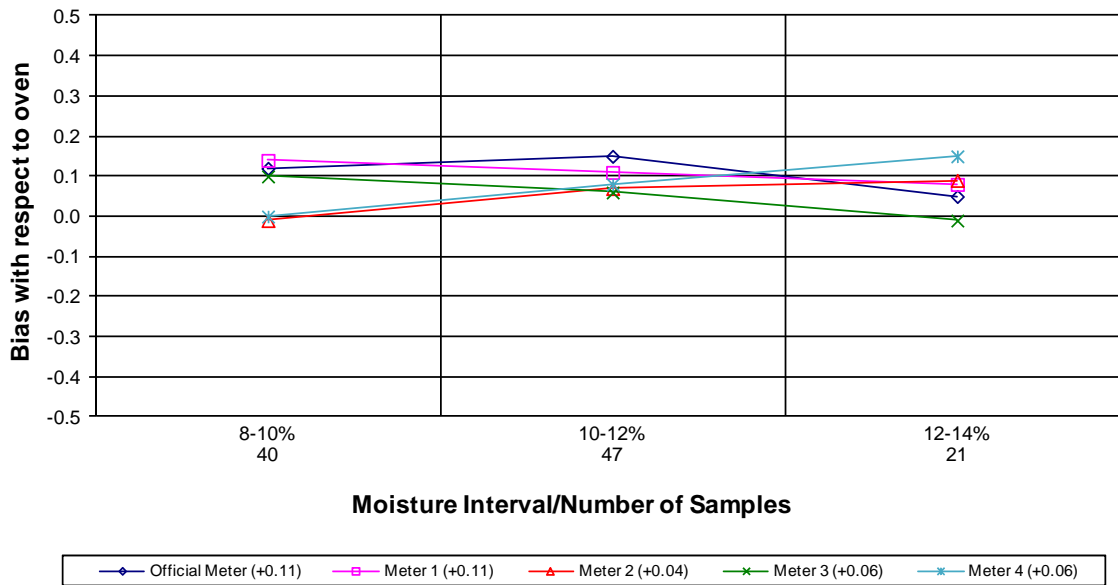
Moisture Meter Comparison - Durum 2009 - 2011 Crop Years



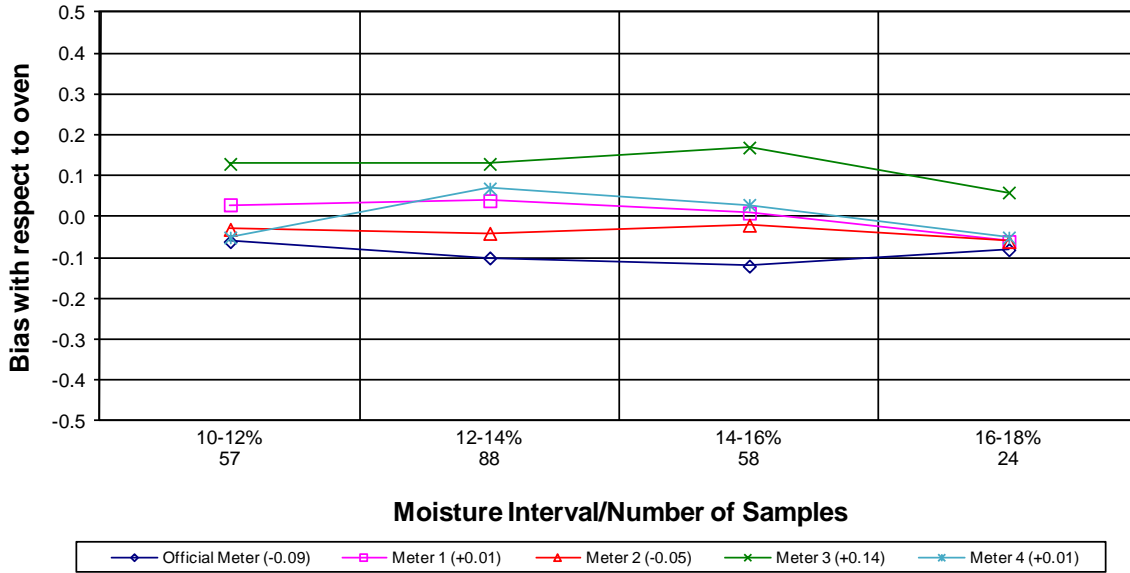
Moisture Meter Comparison - Hard Red Spring Wheat 2009 - 2011 Crop Years



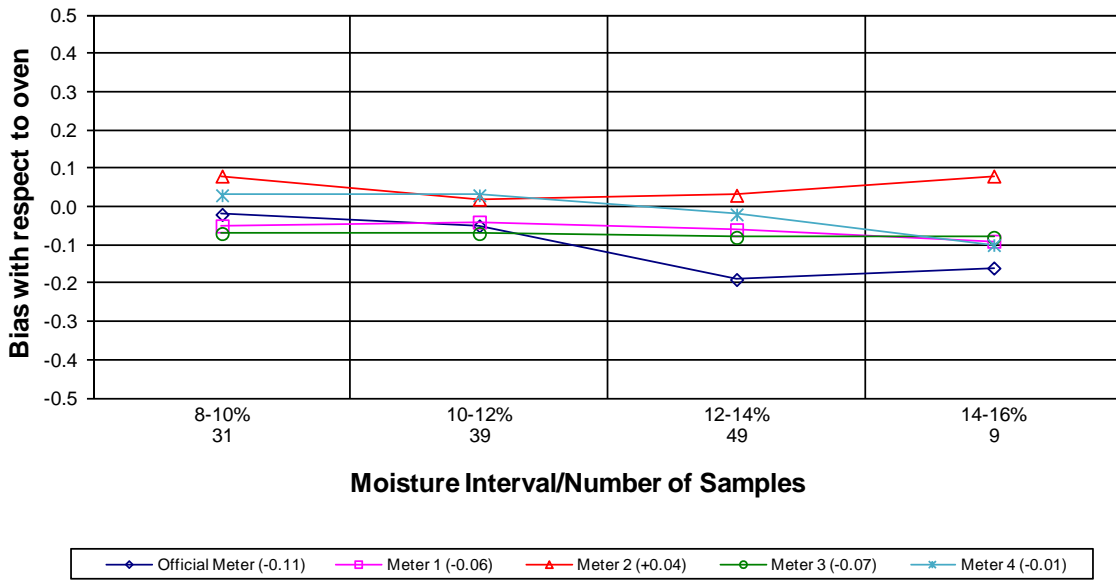
Moisture Meter Comparison - Hard White Wheat 2009 - 2011 Crop Years



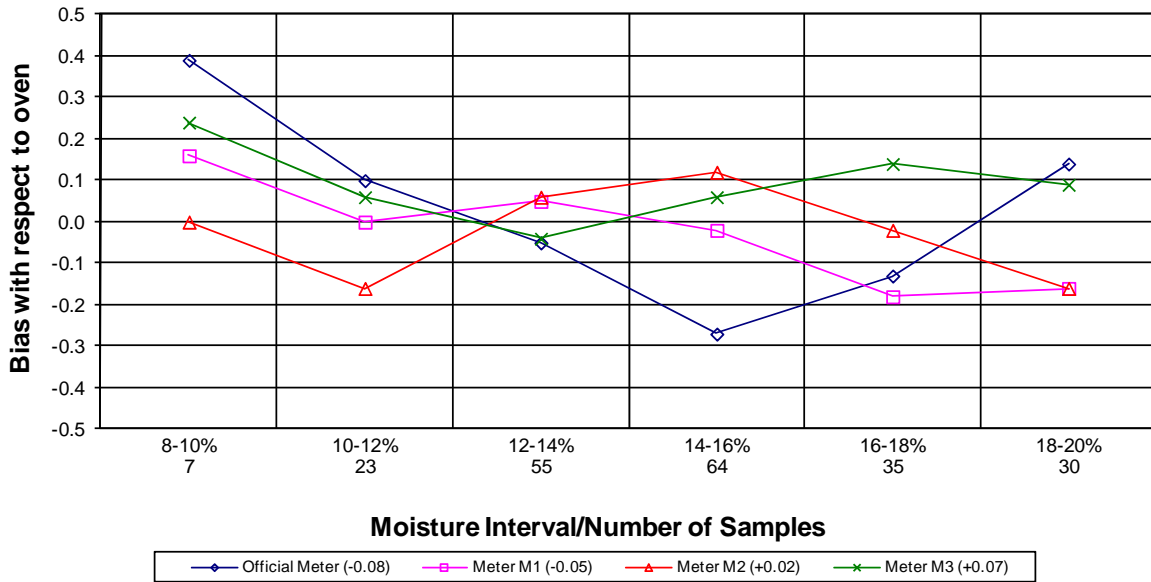
Moisture Meter Comparison - Soft Red Winter Wheat 2009 - 2011 Crop Years



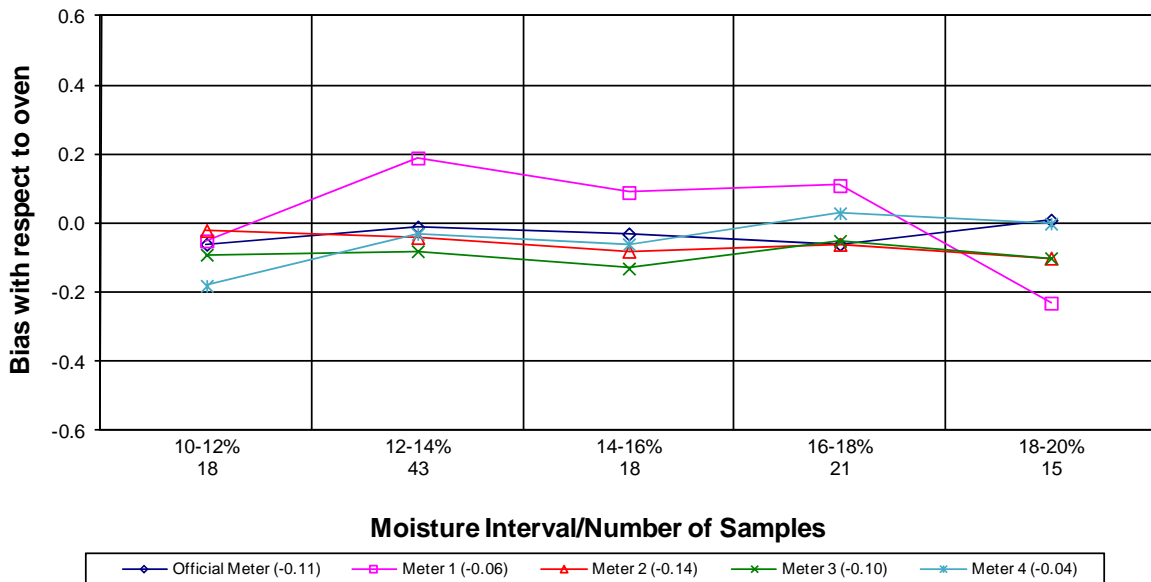
Moisture Meter Comparison - Soft White Wheat 2009 - 2011 Crop Years



Moisture Meter Comparison - Long Grain Rough Rice 2009 - 2011 Crop Years

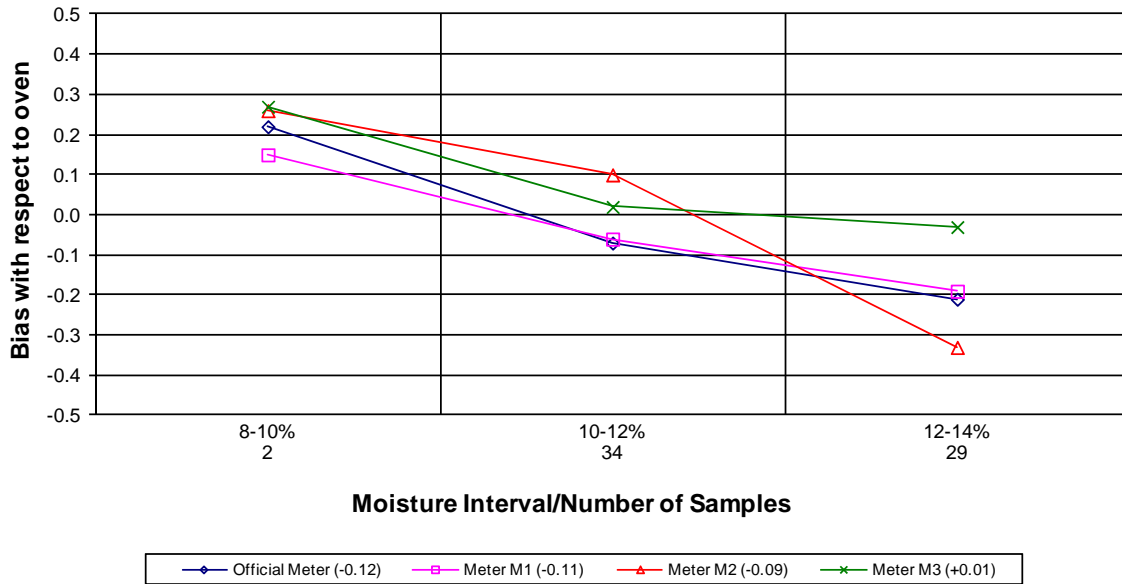


Moisture Meter Comparison - Medium Grain Rough Rice 2009 - 2011 Crop Years



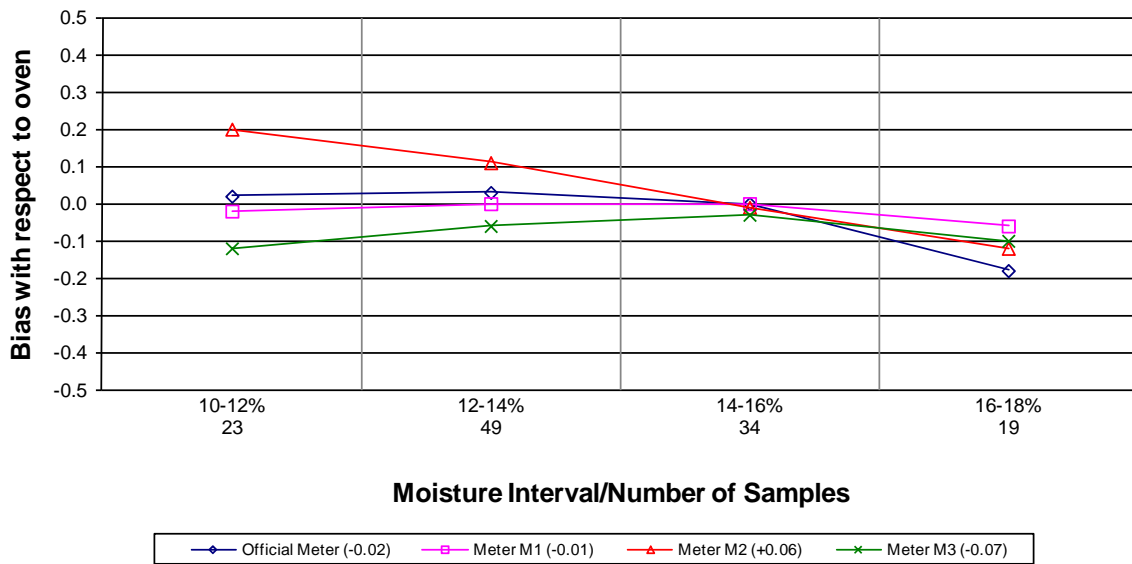
Moisture Meter Comparison - Oats

2009 - 2011 Crop Years

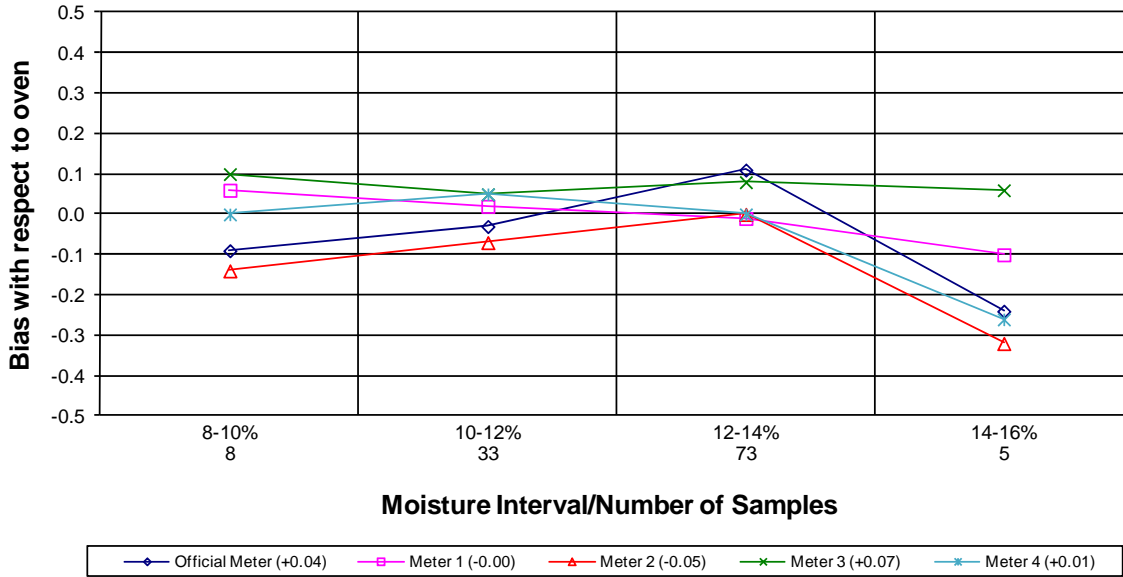


Moisture Meter Comparison - Grain Sorghum

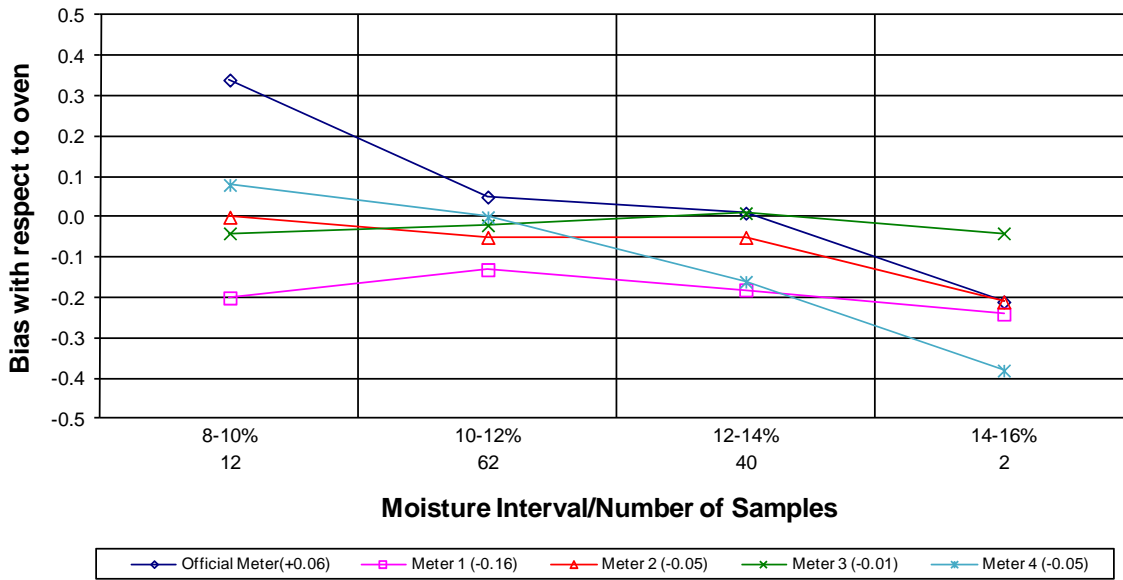
2009 - 2011 Crop Years



Moisture Meter Comparison - Six Row Barley 2009 - 2011 Crop Years



Moisture Meter Comparison - Two Row Barley 2009 - 2011 Crop Years



Moisture Meter Comparison - Sunflower Seed

2009 - 2011 Crop Years

