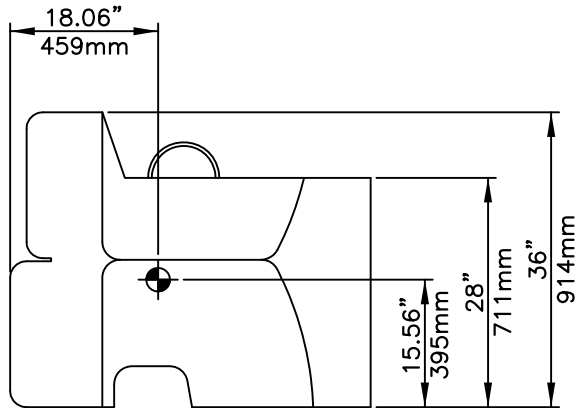
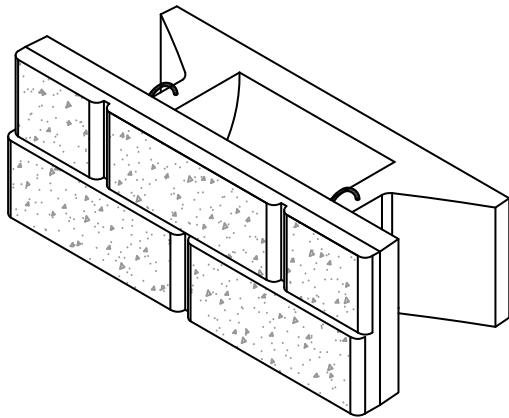
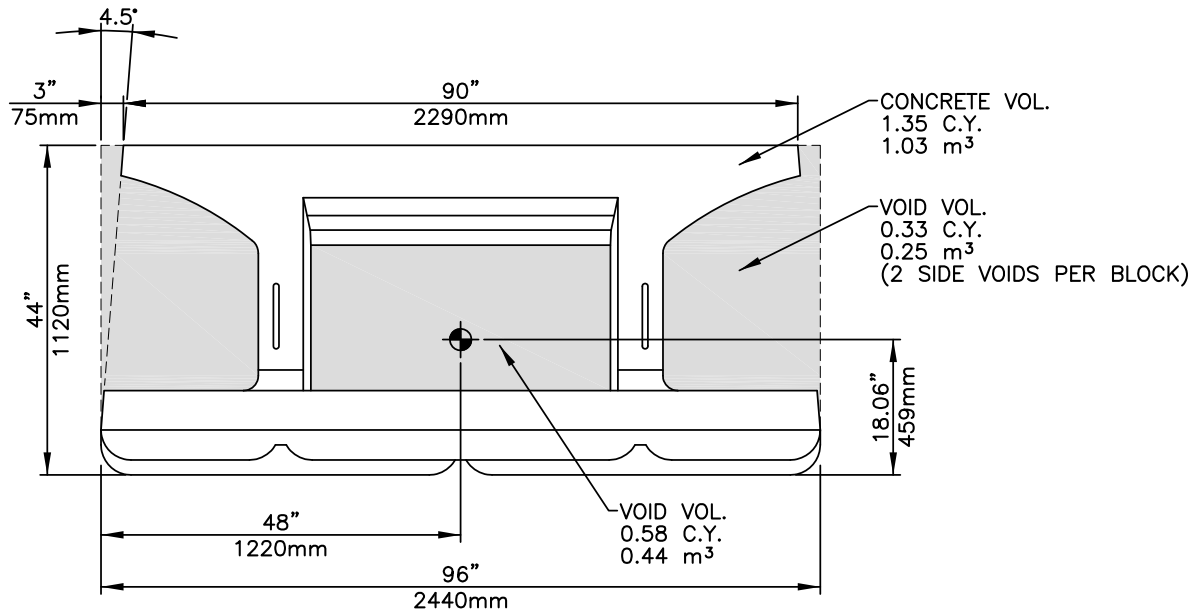
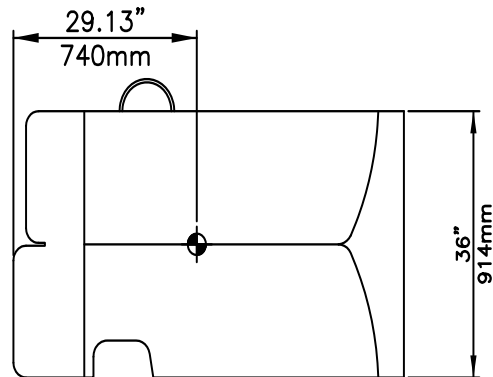
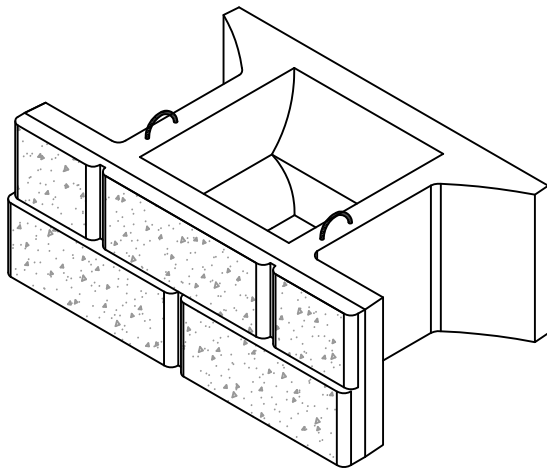
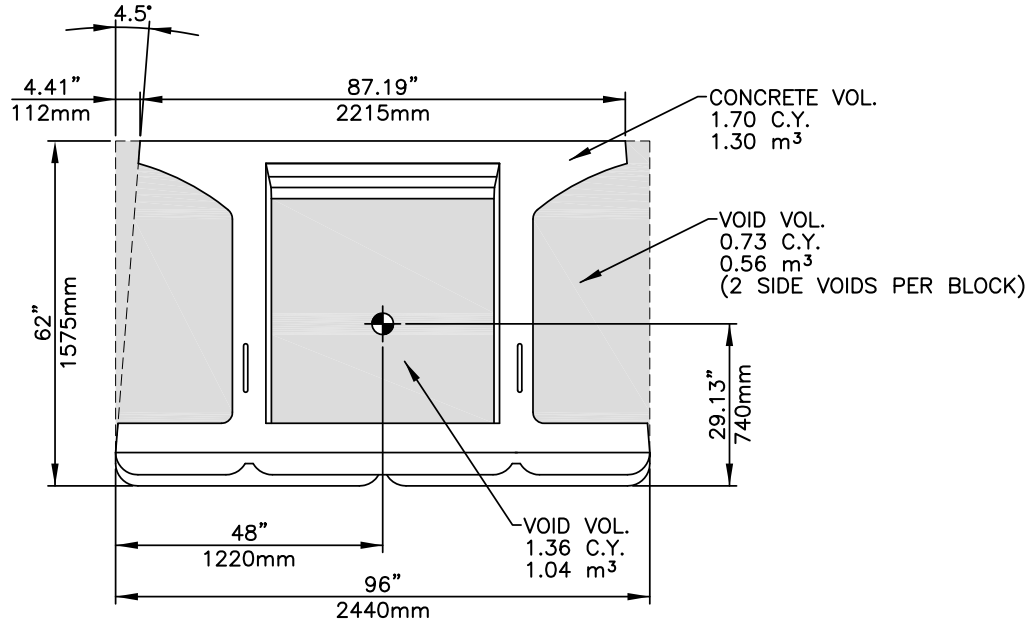


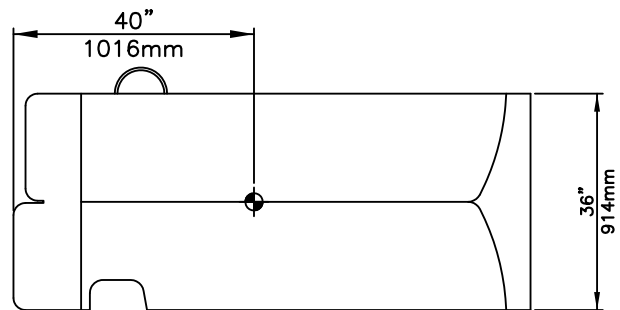
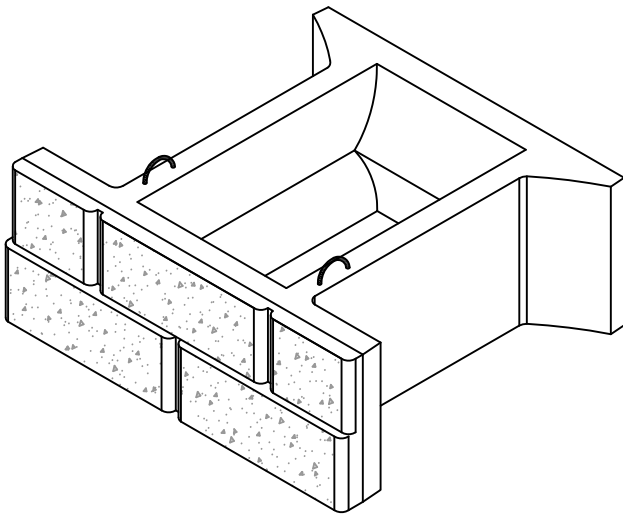
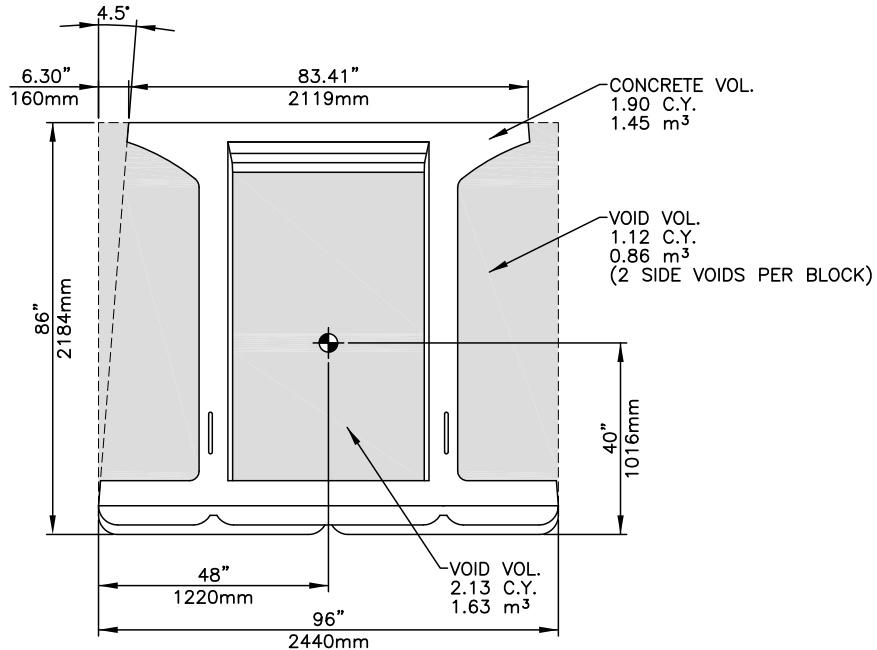
Block Wt.	6,000 lbs	2,720 kg
Form Wt.	4,600 lbs	2,090 kg
Concrete Volume	1.50 CY	1.15 m ³
Aggregate Infill	1.60 CY	1.22 m ³
(per face area)	0.1 tons/sf	1,000 kg/m ²



Block Wt.	5,400 lbs	2,445 kg
Form Wt.	4,930 lbs	2,235 kg
Concrete Volume	1.35 CY	1.03 m ³
Aggregate Infill	1.24 CY	0.94 m ³
(per face area)	0.1 tons/sf	1,000 kg/m ²



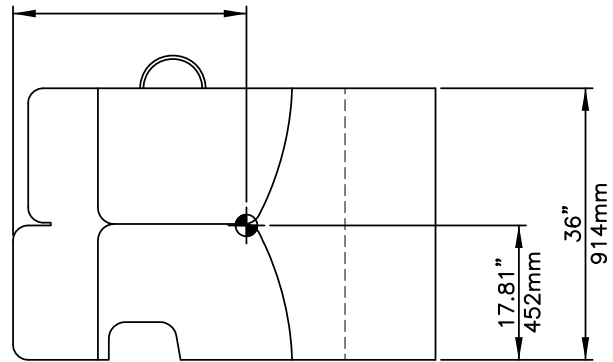
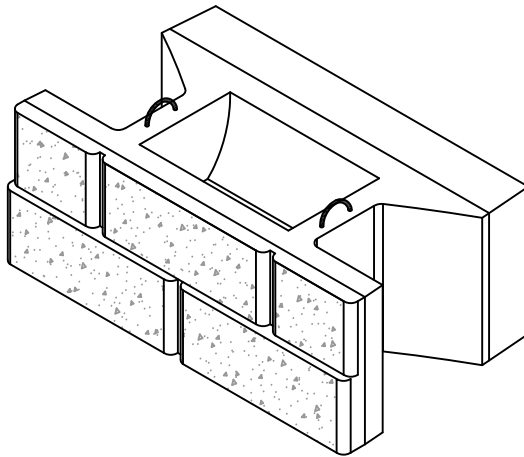
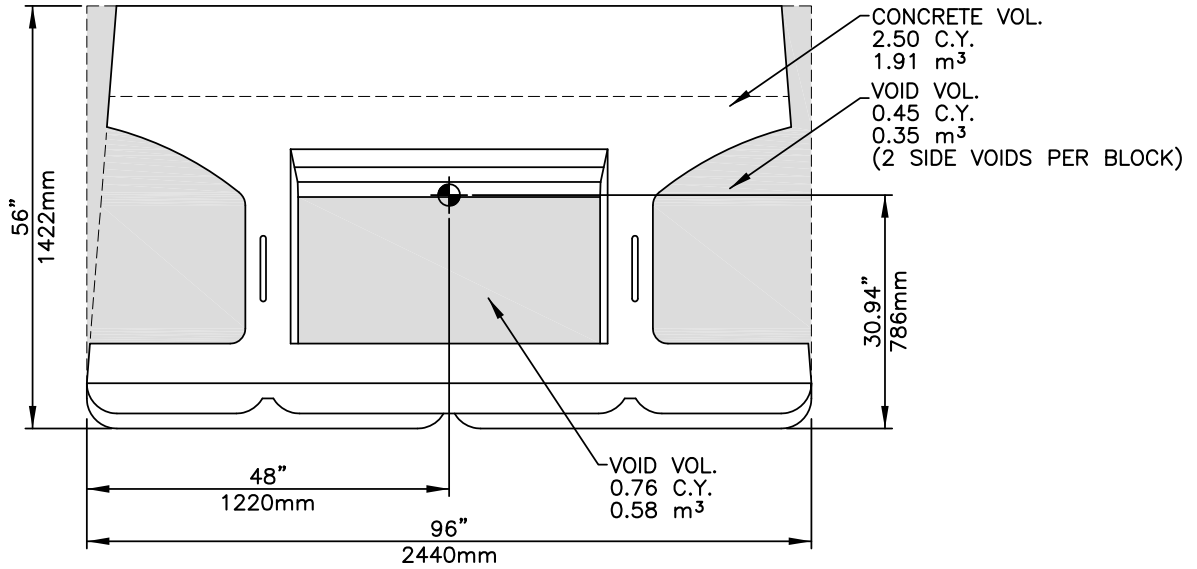
Block Wt.	6,800 lbs	3,080 kg
Form Wt.	6,580 lbs	2,990 kg
Concrete Volume	1.70 CY	1.30 m ³
Aggregate Infill	2.82 CY	2.16 m ³
(per face area)	0.2 tons/sf	2,000 kg/m ²



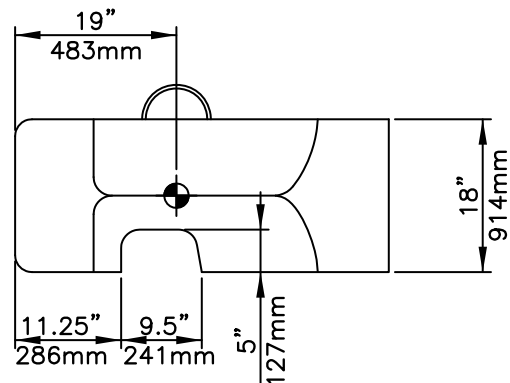
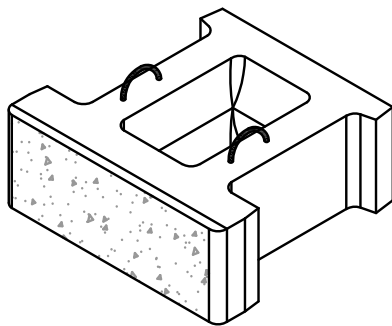
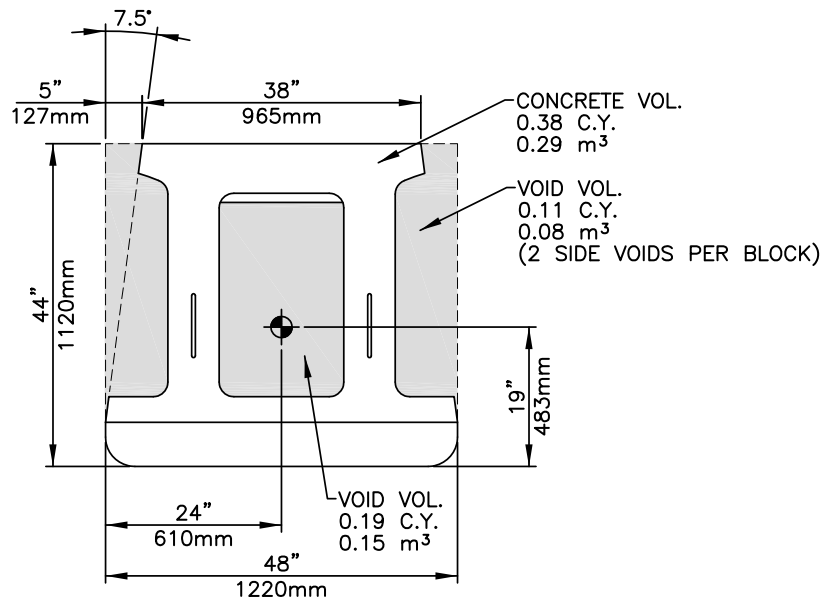
Block Wt.	7,600 lbs	3,445 kg
Form Wt.	7,695 lbs	3,490 kg
Concrete Volume	1.90 CY	1.45 m ³
Aggregate Infill	4.37 CY	3.35 m ³
(per face area)	0.3 tons/sf	3,000 kg/m ²

SYSTEM COMPONENTS

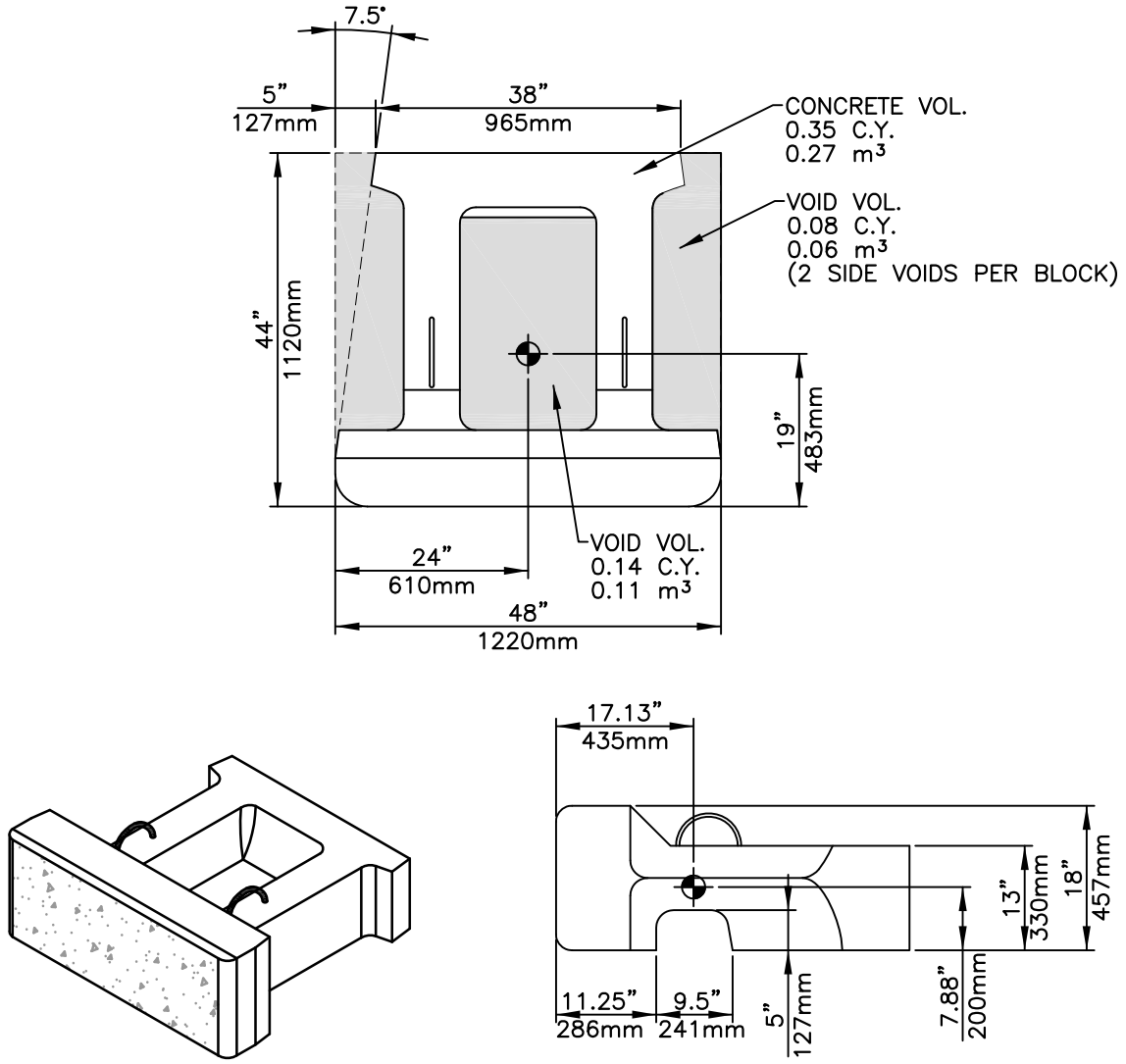
24 SF MASS EXTENDER BLOCK



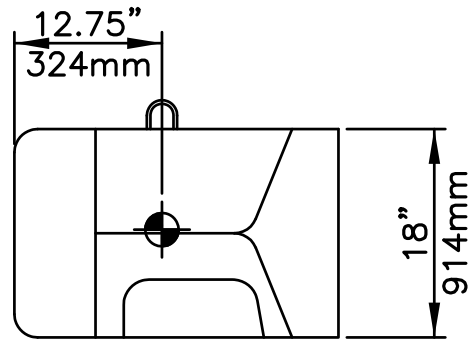
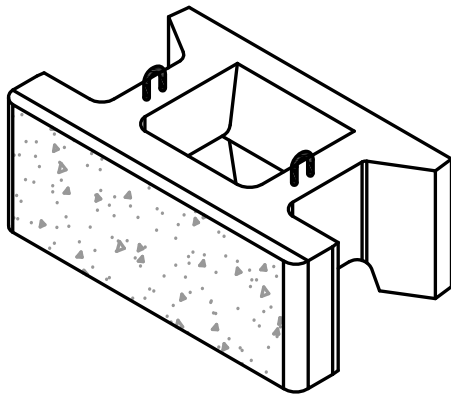
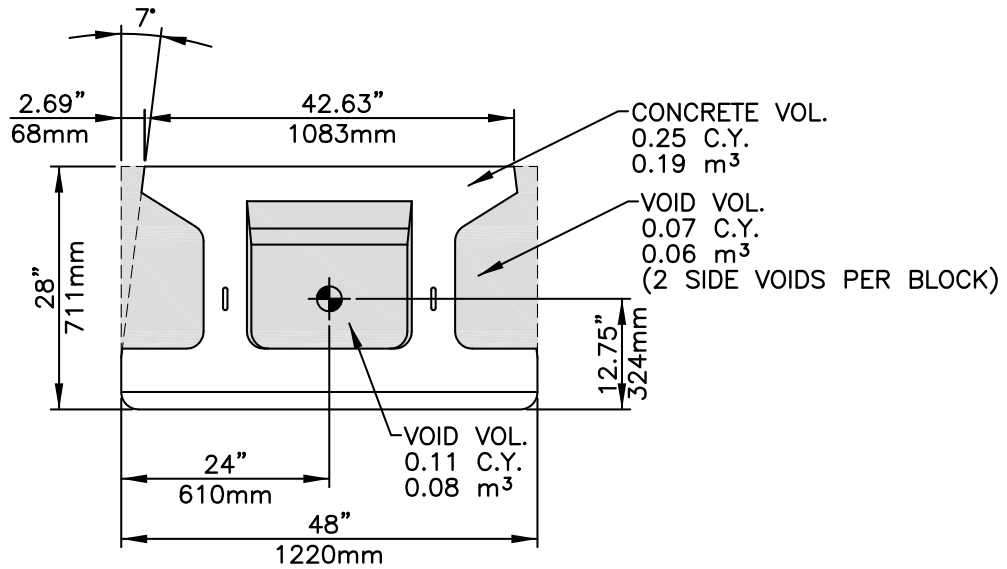
Block Wt.	10,000 lbs	4,585 kg
Form Wt.	5,120 lbs	2,320 kg
Concrete Volume	2.50 CY	1.91 m ³
Aggregate Infill	1.66 CY	1.28 m ³
(per face area)	0.1 tons/sf	1,000 kg/m ²



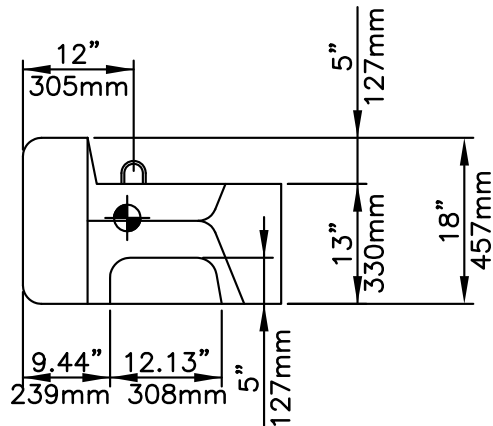
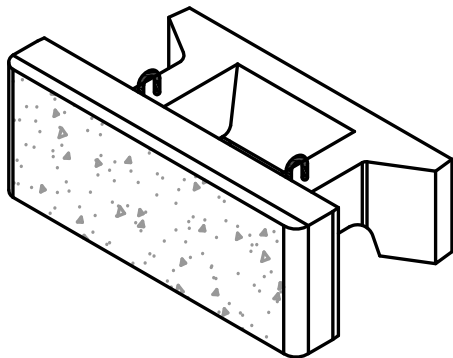
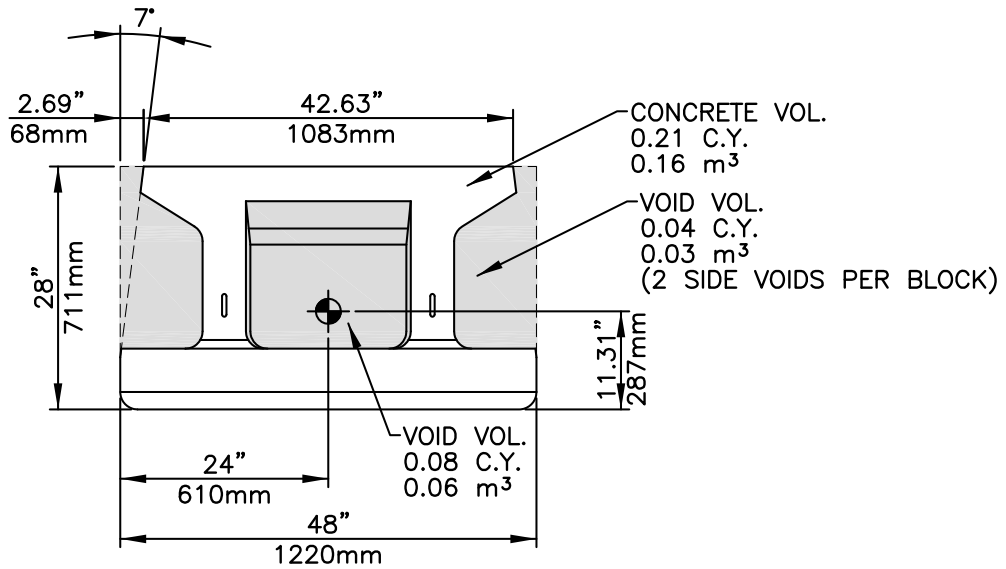
Block Wt.	1,500 lbs	680 kg
Form Wt.	1,800 lbs	815 kg
Concrete Volume	0.38 CY	0.29 m ³
Aggregate Infill	0.41 CY	0.31 m ³
(per face area)	0.1 tons/sf	1,000 kg/m ²



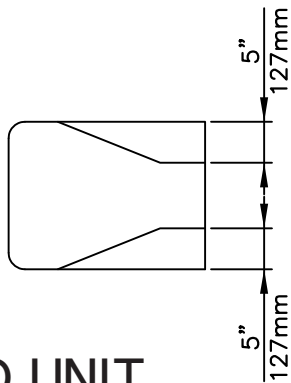
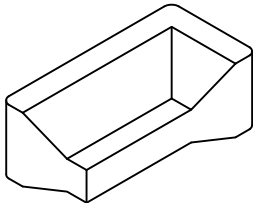
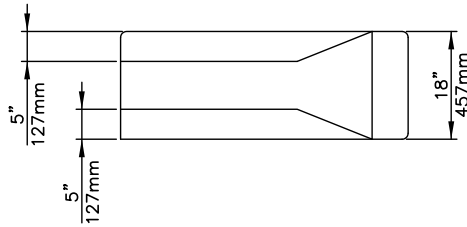
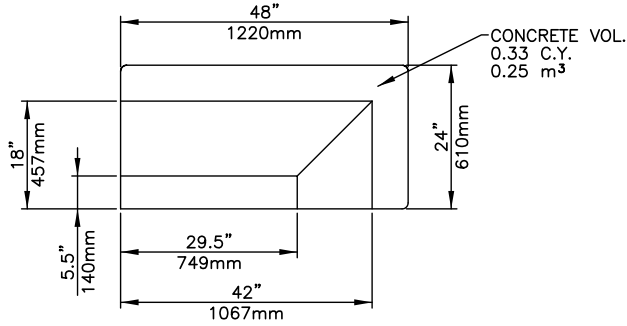
Block Wt.	1,400 lbs	635 kg
Form Wt.	1,955 lbs	885 kg
Concrete Volume	0.35 CY	0.27 m ³
Aggregate Infill	0.30 CY	0.23 m ³
(per face area)	0.1 tons/sf	1,000 kg/m ²



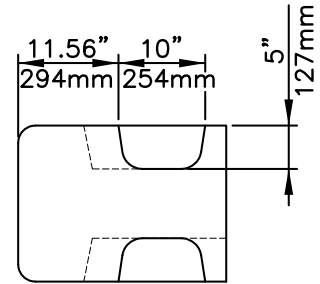
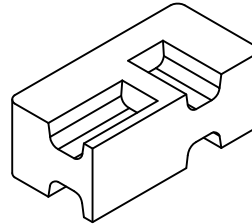
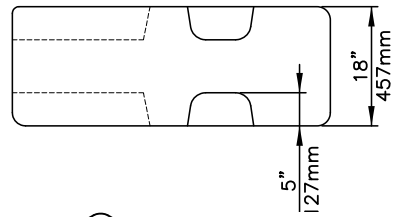
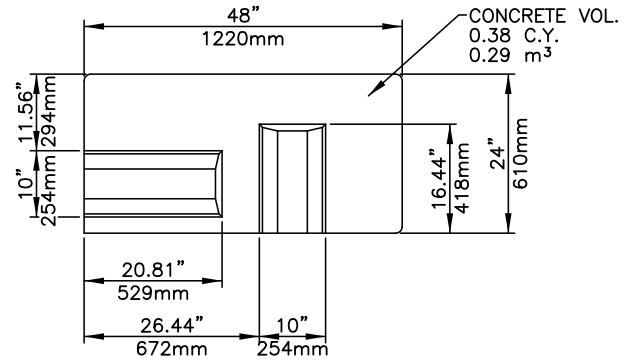
Block Wt.	950 lbs	430 kg
Form Wt.	1,500 lbs	680 kg
Concrete Volume	0.25 CY	0.19 m ³
Aggregate Infill	0.25 CY	0.19 m ³
(per face area)	0.07 tons/sf	700 kg/m ²



Block Wt.	840 lbs	380 kg
Form Wt.	1,580 lbs	715 kg
Concrete Volume	0.21 CY	0.16 m ³
Aggregate Infill	0.16 CY	0.12 m ³
(per face area)	0.07 tons/sf	700 kg/m ²



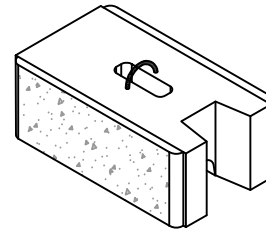
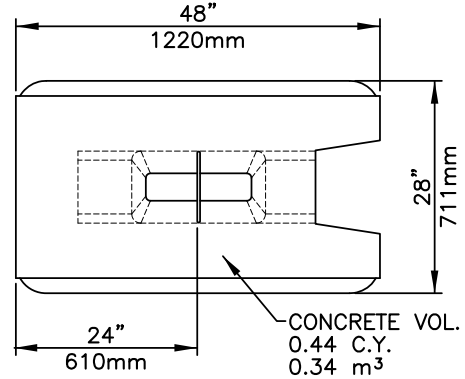
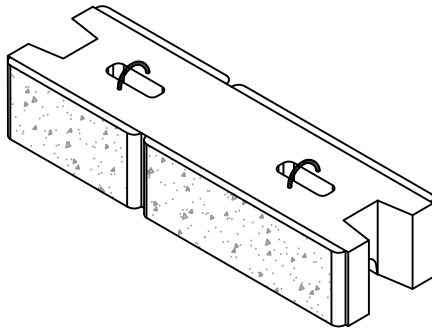
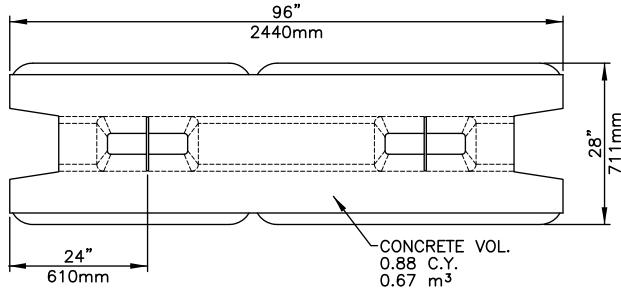
END UNIT



CORNER UNIT

Block Wt.	1,300 lbs	590 kg
Form Wt.	1,650 lbs	750 kg
Concrete Volume	0.33 CY	0.25 m³

Block Wt.	1,500 lbs	680 kg
Form Wt.	1,490 lbs	675 kg
Concrete Volume	0.38 CY	0.29 m³

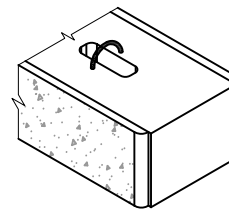
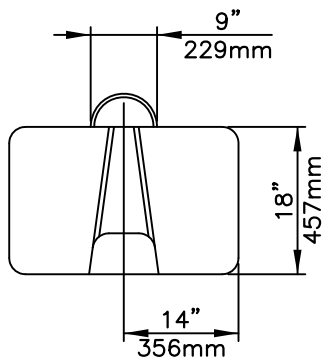


DUAL FACE UNIT

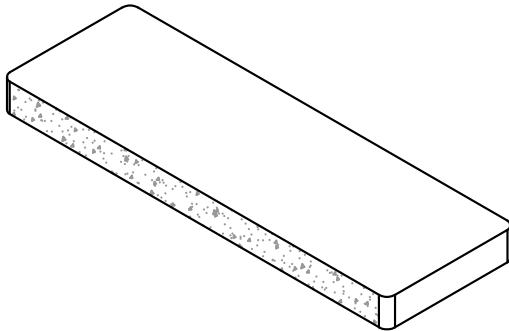
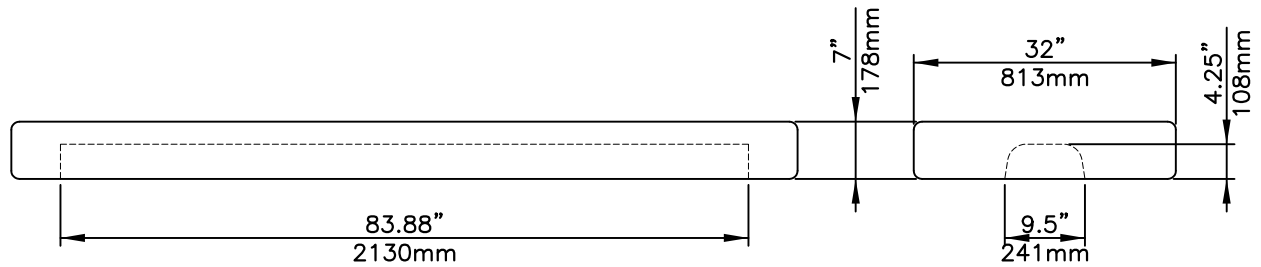
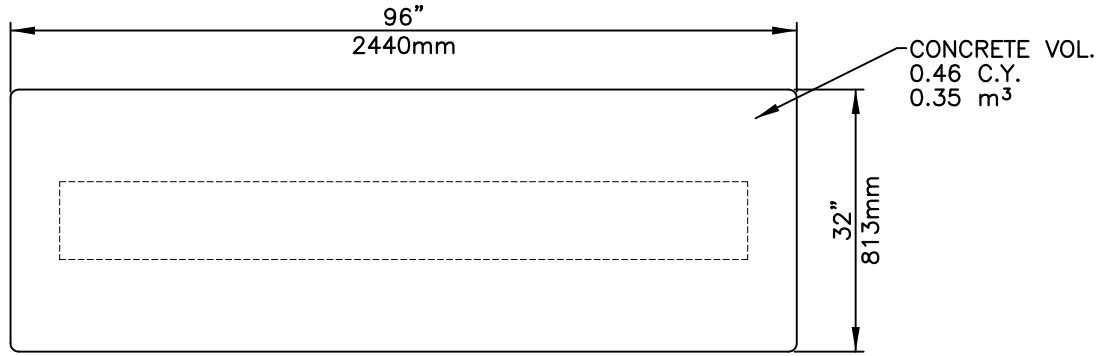
Block Wt.	3,520 lbs	1,595 kg
Form Wt.	2,430 lbs	1,100 kg
Concrete Volume	0.88 CY	0.67 m ³

DUAL FACE HALF UNIT

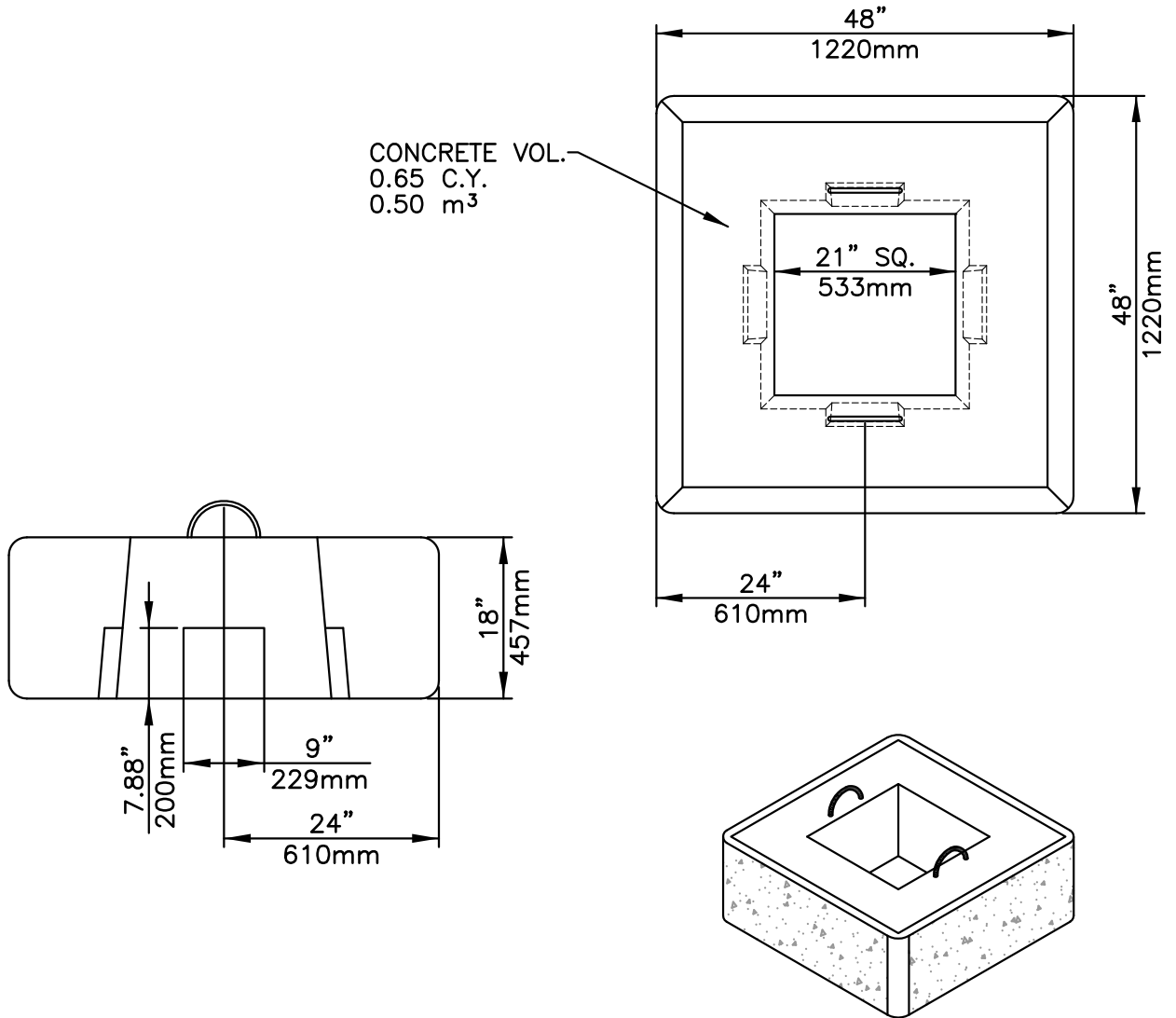
Block Wt.	1,760 lbs	800 kg
Form Wt.	2,430 lbs	1,100 kg
Concrete Volume	0.44 CY	0.34 m ³



ALTERNATE FINISHED END



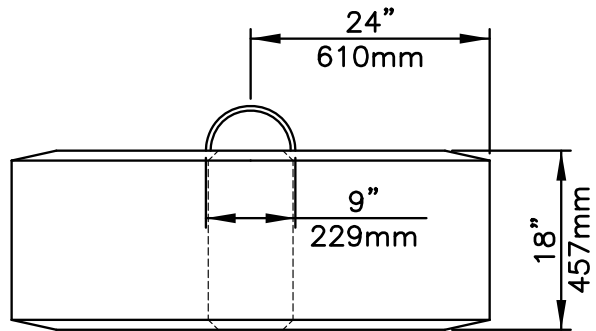
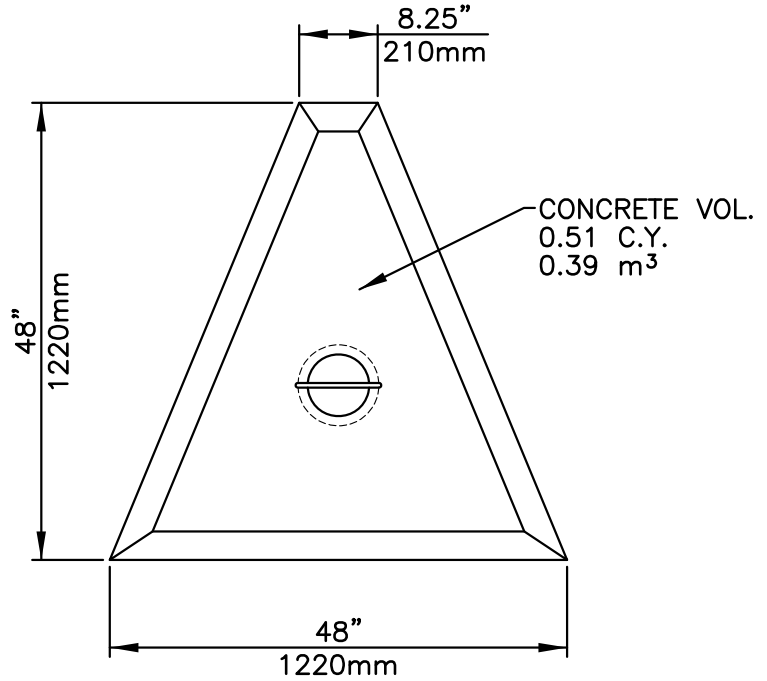
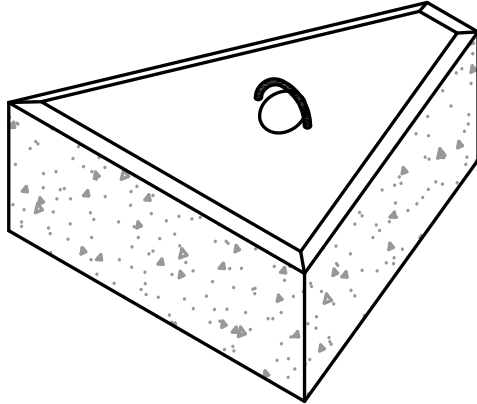
Block Wt.	1,800 lbs	815 kg
Form Wt.	1,425 lbs	645 kg
Concrete Volume	0.46 CY	0.35 m ³



Block Wt.	2,600 lbs	1,180 kg
Form Wt.	2,455 lbs	1,115 kg
Concrete Volume	0.65 CY	0.50 m ³

SYSTEM COMPONENTS

45° CORNER BLOCK



Block Wt.	2,040 lbs	925 kg
Form Wt.	3,325 lbs	1,510 kg
Concrete Volume	0.51 CY	0.39 m ³